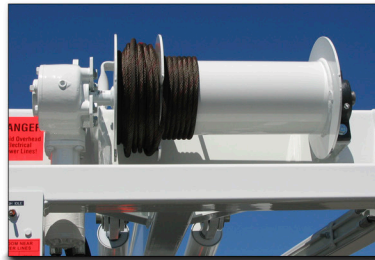


Standard features

- Fast and easy setup.
- Hydraulically operated self supporting mast eliminates the need for a guy cable in most situations.
- Hydraulic rear outriggers.
- Holding valves on outrigger and mast cylinders.
- Fail-safe winch brake system.
- Designed for easy access to inconveniently located pumps, pump houses and windmills.
- Controls are conveniently located at the left rear.
- Automatic engine speed control.
- PTO for manual transmission is included. PTO for an automatic transmission is also available.
- The pump hoist may be mounted in a utility body or on a flat bed.
- Open frame design for full use of the deck area.
- Blocks for multiple lines are included.
- Standard color is gray.

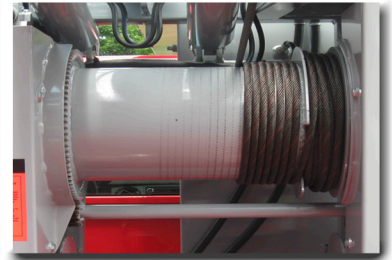
Optional features

- Sandline winch
 - Oil cooler
 - Cathead
 - Breakout wrench cylinder
 - Front hydraulic outrigger
 - Extended mast height
 - Corded remote control
 - Wireless remote control
 - Tailgate
 - Rear bumper
 - Toolboxes
 - Mast lights
 - Electronic Walking beam
 - Special paint colors
 - Utility body
 - Flat bed
 - Headache rack
 - Power to rear
 - Wire winder
 - Plastic pipe reel
 - Pipe racks
 - Powered pipe racks
- Other options available on request.



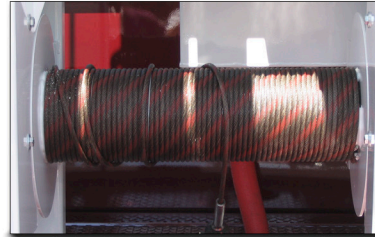
Main Winch 3T

The hydraulically driven worm drive gearbox eliminates the need for a brake. This makes the winch completely fail safe.



Main Winch 4T, 5T & 6T

Heavy duty ring and pinion drive operate the mainline spool. An automatic fail-safe brake provides braking.



Sandline Winch

325 feet per minute bare spool line speed.



Oil Cooler

Heavy duty cooling coil and 16" 10-blade DC fan allows for continuous hoist operation in most conditions.

3T, 4T & 5T: 1,000 lb. bare spool lifting capacity. It is power up and down with a heavy duty clutch for free-fall.

Spool cable capacity:

1/4" - 1,650 ft.

5/16" - 1,050 ft.

3/8" - 740 ft.

6T: 2,300 lb. bare spool lifting capacity. It is power up and down. Also available with a heavy duty clutch for free-fall.

Spool cable capacity:

5/16" - 1,200 ft.

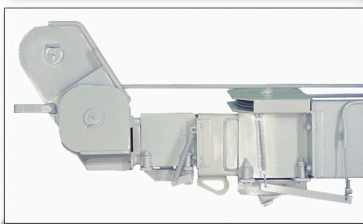
3/8" - 850 ft.

7/16" - 600 ft.



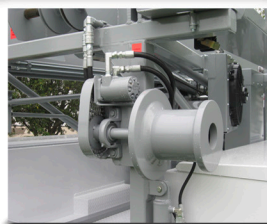
Pipe Racks

The 19 ft. long racks with ratchet straps will carry about 700 ft. of 1" pipe. DC Powered racks will lower and raise the end of the rack either 14" or 18".



E-3 Mast Extension

Designed for windmills. The mast can be telescoped an additional 10 ft. and layback distance is improved by about 4 1/2 ft. When extended the following load limits apply:
3T & 4T: 800 lbs.
5T: 1,500 lbs.
6T: 2,000 lbs.



Cathead

The cathead is a hydraulically driven 6" diameter capstan mounted on the right rear corner. Pulling capacity is 1000 lbs. at 110 RPM.



Breakout Wrench

The cylinder pins to the rear frame of the rig and is designed to attach to conventional chain tongs.



Front Jack

The front hydraulic jack aids in leveling the truck on uneven terrain and eliminates the truck spring reaction while operating the hoist.



Wire Winder

The hydraulic variable speed wire winder mounts on the rear of the pump hoist frame on an arm that locks into multiple positions.